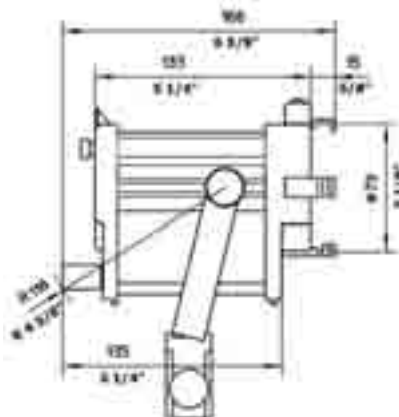
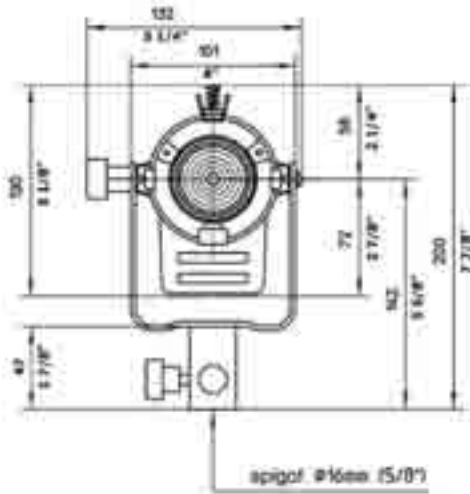


150W Fresnel



The 530100 150W Fresnel is designed primarily for 120V operation and uses a lamp with a double contact bayonet base. The only 220/230V lamp available is the 530146 200W JCV lamp. The 530102 150W Fresnel is for 220/230V operation only, and uses a lamp with a 2-pin (GX6.35) base. There is no 120V lamp available for this fixture.



Cat. No.	Description
530100	150W Fresnel (120V)
530106	150W Fresnel, Gray (120V)
530102	150W Fresnel (220V) - includes inline dimmer
530110	Four Leaf Barndoor
530120	Filter Frame
530130	Snoot
530150	3" Full Single Scrim
530151	3" Half Single Scrim
530152	3" Full Double Scrim
530153	3" Half Double Scrim
571711	Scrim Bag
853276	Safety Cable
571740	1800W Digital Dimmer
571192W	Compact 4-Light Case

Lamps

Code	ESR	ESP	A1248
Watts	100	150	150
Volts	120	120	230
Color Temp (K)	2900	2900	3200
Approx. Life (hrs)	750	1000	50

Specifications

Weight	2.3 lbs. (1.0 kg)
Cable	12 ft. (3.7 m) cable with inline switch
Lampholder	DC bayonet
Lens Diameter	2" (50.8 mm) low expansion borosilicate Fresnel lens
Reflector	Spherical specular high purity aluminum
Lampholder	GY9.5 (230v)
Mounting	5/8" (16 mm) stand mount

Photometric Data with ESP 150W Lamp

Distance	3 ft. (0.9 m)	5 ft. (1.5 m)	10 ft. (3.0 m)	15 ft. (4.6 m)
Spot Focus Beam Angle 14°				
Footcandles	452	163	41	18
Beam Diameter	0.7 ft. (0.2 m)	1.2 ft. (0.4 m)	2.5 ft. (0.8 m)	3.7 ft. (1.1 m)
Medium Focus Beam Angle 30°				
Footcandles	216	78	19	9
Beam Diameter	1.6 ft. (0.5 m)	2.7 ft. (0.8 m)	5.4 ft. (1.6 m)	8.0 ft. (2.4 m)
Flood Focus Beam Angle 44°				
Footcandles	162	58	15	6
Beam Diameter	2.4 ft. (0.7 m)	4.0 ft. (1.2 m)	8.1 ft. (2.5 m)	12.1 ft. (3.7 m)

Spot Performance at any distance:

Footcandles (or lux) = 4,100 ÷ Distance² Beam Diameter = Distance x 0.25

Medium Performance at any distance:

Footcandles (or lux) = 1,900 ÷ Distance² Beam Diameter = Distance x 0.54

Flood Performance at any distance:

Footcandles (or lux) = 1,500 ÷ Distance² Beam Diameter = Distance x 0.81